



**We Regard Customer Satisfaction
As the Measure of Quality**

www.atmsgroup.com.au

AUSTRALASIA TURBOMACHINERY SERVICES

Part of ATMSGroup Pty Ltd

We are a global service provider to owners and operators of turbo-machinery in the Power Generation, Oil & Gas and Petrochemical industries. Our services include installation, operation, maintenance, repair and overhaul of turbomachinery equipment such as Gas Turbines, Steam Turbines, Generators, Compressors, Pumps, Gearboxes and associated electrical /instrumentation.

It is our goal to provide the best independent turbo-machinery technical and management support available in the business to our valued clients.

Our highly skillful team, with decades of technical experience and diversity of talent, enable us to provide our clients leadership, technical expertise and product knowledge covering a wide range of rotating equipment.

We are committed to providing highly experienced and effective technical and management professionals, at a reasonable and competitive cost.

We are committed to both our clients and our employees to provide win-win, mutually agreeable and sustainable long-term relationships.

Being a proud 100% Australian owned and family operated business gives you piece of mind that you are in safe hands.

We would like to thank you for choosing or considering ATMSGroup and guarantee we will exceed your expectations.

Jason Bretones
Managing Director

A stylized, handwritten signature in dark blue ink, consisting of several loops and a long horizontal stroke at the bottom.



The Company

“Australasia Turbomachinery Services ATMSGroup has a combined industry experience of 60 years and its key management team is made up of very skilled and professional personnel...”

Our Field Services team offers complete turnkey support to make sure your plant is properly maintained and operating with minimal downtime.

We offer flexible solutions that are focused on maximizing your return on investment. From unexpected outages to scheduled maintenance, turbine major overhauls and plant relocation. Australasia Turbomachinery Services (ATMS) response and turnaround times are unmatched.

Our team has 24/7 access to engineering support to safely diagnose and complete repairs. From planned outages and project execution, to unplanned outages and post-outages reporting, Australasia Turbomachinery Services will maintain your equipment with limited downtime

As stated by our corporate slogan "Customer satisfaction is the measure of quality" we strive to always achieve the highest attainable levels of efficiency in providing timely solutions to our clients.



FIELD SERVICES

Field Support & Engineering Services

- Turnkey Turbine and Plant Overhauls
- Major Inspection
- Hot Gas Path Inspections
- Combustion Inspections
- Gas Turbine Packages Installation, Relocation and Commissioning
- Field Balance
- Borescope Inspections and Reporting
- Scheduled and Breakdown Maintenance
- Technical Support
- Mechanical and E&I Labor Services
- General Construction
- Comprehensive Customer Reports
- Gearbox Inspection and Overhaul
- Generator Overhauls
- Total Machine Alignment
- Instrumentation Checks and Calibration
- Plant Start-Up and Commissioning
- Control System Upgrades
- Remaining Life Assessment Tests & Activities



COMPONENT REPAIRS

Australasia Turbomachinery Services (ATMSGroup) offers cutting-edge inspection, repair and coatings for a broad range of turbine equipment.

Specializing in Heavy Industrial Turbines our team can revitalize and repair all hard or exotic items to O.E.M specifications.

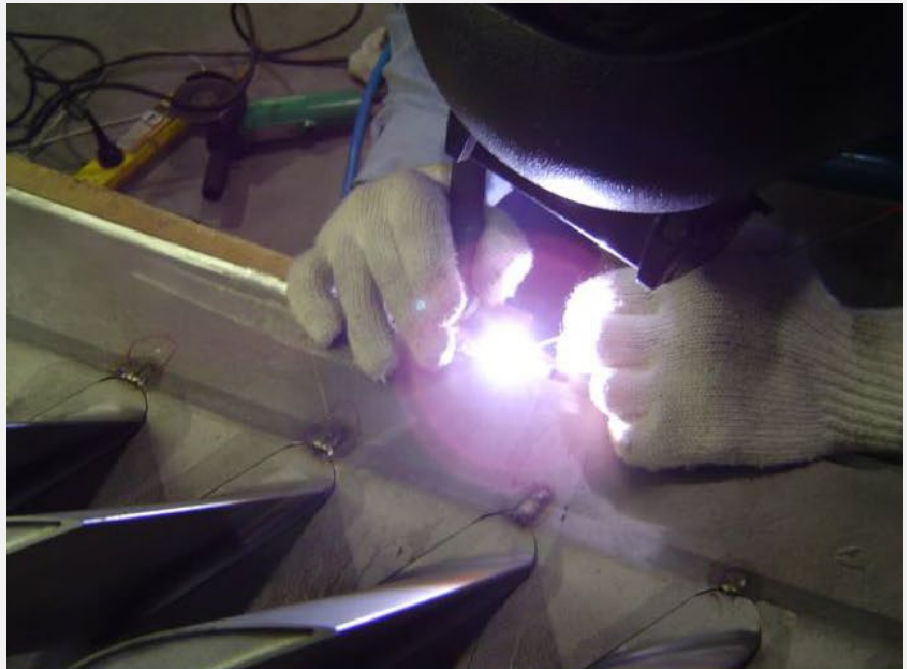
Through collaborative thinking we can maximize asset performance, and extend equipment life through our innovative repair processes minimizing downtime.

Advantages

Specialized Gas Turbine Component Repair

Specialized Welding Exotic and Super Alloy Materials

- Titanium Alloys
- Nickel Alloys
- Cobalt Alloys
- Stainless Steel
- Carbon & Low Alloy Steels
- Aluminium Alloys
- Magnesium Alloys
- Tungsten Inert Gas Welding
- Machining
- Coatings
- NDT
- Thermal Spray
- Heat Treatment
- Hard Chrome



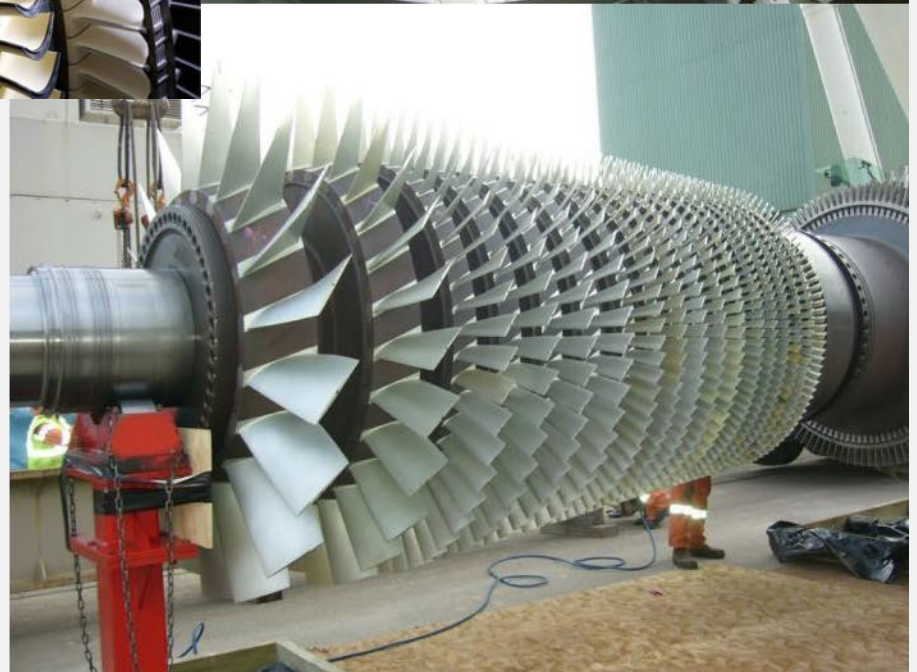
FIELD SERVICES

Gas Turbine

Rotor

Overhaul

- Pre - Strip down Balance and Inspection
- Rotor Cleaning (Ice and Glass Bead Blasting)
- Complete Rotor NDT and NDE (Replications & Hardness Tests)
- Compressor Stationary & Rotating Blades Coating
- Rotor Reassembly
- Rotor Balance and Run-Outs
- Vibration Analysis





Corporate Responsibility

“We consider Environment Health & Safety our corporate responsibility and a necessity in order to excel in our business activities and services.”



We, through our commitment to continued improvement in our Environmental Health and Safety programs, strive to:

- Be an environmentally responsible provider of high-quality services.
- Excel In preserving and protecting our natural resources.
- Be a responsible employer, adhering to health & safety regulations.

Our commitment to the safety of our employees is based on the following principles:

- All injuries can be avoided and prevented
- Management is responsible for preventing injuries
- Employee involvement is essential
- Training employees to be responsible in maintaining a safe work environment is a must

ATMSGROUP management is responsible for this policy and its scope and for communicating it and ensuring its implementation. The whole ATMSGROUP team is responsible and committed to integrating these core values and objectives into the day-to-day process and operational practices

BORESCOPIC INSPECTIONS

Borescope & Remote Visual Inspections of Steam, Gas, Aero- Derivative Turbines and Generators...

Australasia Turbomachinery Services (ATMSGroup) deliver comprehensive, professional on-site inspections. We can give you the peace of mind of knowing the current condition of your gas turbine. This can be determined inexpensively and with minimal disruption to production through a borescope inspection.

Latest inspection service technology using Waygate technologies Everest borescope utilizing 3D phase measurement, combined with experts and years of hands-on experience, our experts will report on metallurgical conditions of internal components. Digital photographs will be made available before leaving the site. Timely follow-up reports are delivered with representative photographs and analysis of defects and recommendations.

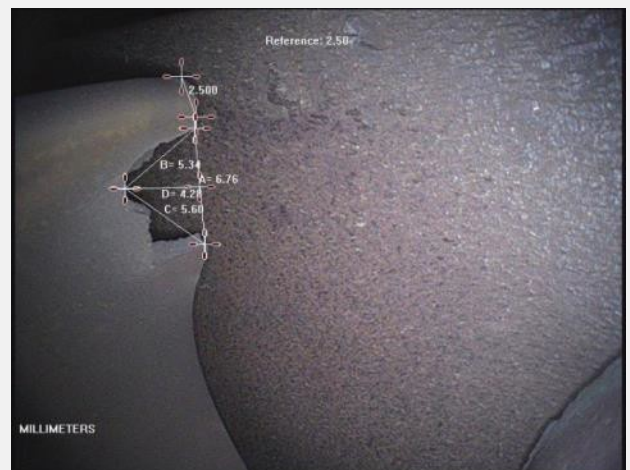
ATMS utilizes an experienced network of independent and OEM qualified specialists on behalf of its clients to facilitate any critical path.

Inspections of all types...

- Gas Turbines
- Steam Turbines
- Generators
- Bearings
- Compressors
- Combustion Systems
- Condenser Tubes
- Lube Oil Systems
- Heat Exchangers
- Hot Gas Path
- Pipe Drains

Technical Advisory of Mechanical Inspections...

- Accessory Base
- Combustion
- Hot Gas Path
- Major Overhaul



PROJECT SERVICES

Outage Management Consultancy

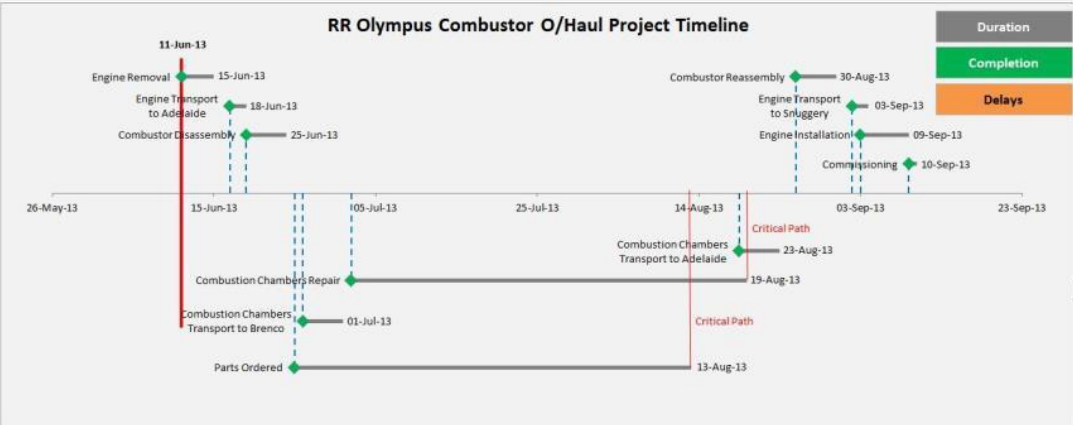
- Project Management
- Turnkey Outage Management and Planning
- Engineering Services
- Site Labor and Supervision
- Preparation and Reviews of critical JSAs/SWMS and ITPs
- Preparation and Reviews of critical Lift Plans
- QA Management
- HSE Management Plan

|--|--|--|--|--|--|--|--|--|--|--|--|--|--|--|--|--|--|--|--|--|--|--|--|--|--|--|--|--|--|--|--|--|--|--|--|--|--|--|--|--|--|--|--|--|--|--|--|--|--|--|--|--|--|--|--|--|--|--|--|--|--|--|--|--|--|--|--|--|--|--|--|--|--|--|--|--|--|--|--|--|--|--|--|--|--|--|--|--|--|--|--|--|--|--|--|--|--|--|--|--|--|--|--|--|--|--|--|--|--|--|--|--|--|--|--|--|--|--|--|--|--|--|--|--|--|--|--|--|--|--|--|--|--|--|--|--|--|--|--|--|--|--|--|--|--|--|--|--|--|--|--|--|--|--|--|--|--|--|--|--|--|--|--|--|--|--|--|--|--|--|--|--|--|--|--|--|--|--|--|--|--|--|--|--|--|--|--|--|--|--|--|--|--|--|--|--|--|--|--|--|--|--|--|--|--|--|--|--|--|--|--|--|--|--|--|--|--|--|--|--|--|--|--|--|--|--|--|--|--|--|--|--|--|--|--|--|--|--|--|--|--|--|--|--|--|--|--|--|--|--|--|--|--|--|--|--|--|--|--|--|--|--|--|--|--|--|--|--|--|--|--|--|--|--|--|--|--|--|--|--|--|--|--|--|--|--|--|--|--|--|--|--|--|--|--|--|--|--|--|--|--|--|--|--|--|--|--|--|--|--|--|--|--|--|--|--|--|--|--|--|--|--|--|--|--|--|--|--|--|--|--|--|--|--|--|--|--|--|--|--|--|--|--|--|--|--|--|--|--|--|--|--|--|--|--|--|--|--|--|--|--|--|--|--|--|--|--|--|--|--|--|--|--|--|--|--|--|--|--|--|--|--|--|--|--|--|--|--|--|--|--|--|--|--|--|--|--|--|--|--|--|--|--|--|--|--|--|--|--|--|--|--|--|--|--|--|--|--|--|--|--|--|--|--|--|--|--|--|--|--|--|--|--|--|--|--|--|--|--|--|--|--|--|--|--|--|--|--|--|--|--|--|--|--|--|--|--|--|--|--|--|--|--|--|--|--|--|--|--|--|--|--|--|--|--|--|--|--|--|--|--|--|--|--|--|--|--|--|--|--|--|--|--|--|--|--|--|--|--|--|--|--|--|--|--|--|--|--|--|--|--|--|--|--|--|--|--|--|--|--|--|--|--|--|--|--|--|--|--|--|--|--|--|--|--|--|--|--|--|--|--|--|--|--|--|--|--|--|--|--|--|--|--|--|--|--|--|--|--|--|--|--|--|--|--|--|--|--|--|--|--|--|--|--|--|--|--|--|--|--|--|--|--|--|--|--|--|--|--|--|--|--|--|--|--|--|--|--|--|--|--|--|--|--|--|--|--|--|--|--|--|--|--|--|--|--|--|--|--|--|--|--|--|--|--|--|--|--|--|--|--|--|--|--|--|--|--|--|--|--|--|--|--|--|--|--|--|--|--|--|--|--|--|--|--|--|--|--|--|--|--|--|--|--|--|--|--|--|--|--|--|--|--|--|--|--|--|--|--|--|--|--|--|--|--|--|--|--|--|--|--|--|--|--|--|--|--|--|--|--|--|--|--|--|--|--|--|--|--|--|--|--|--|--|--|--|--|--|--|--|--|--|--|--|--|--|--|--|--|--|--|--|--|--|--|--|--|--|--|--|--|--|--|--|--|--|--|--|--|--|--|--|--|--|--|--|--|--|--|--|--|--|--|--|--|--|--|--|--|--|--|--|--|--|--|--|--|--|--|--|--|--|--|--|--|--|--|--|--|--|--|--|--|--|--|--|--|--|--|--|--|--|--|--|--|--|--|--|--|--|--|--|--|--|--|--|--|--|--|--|--|--|--|--|--|--|--|--|--|--|--|--|--|--|--|--|--|--|--|--|--|--|--|--|--|--|--|--|--|--|--|--|--|--|--|--|--|--|--|--|--|--|--|--|--|--|--|--|--|--|--|--|--|--|--|--|--|--|--|--|--|--|--|--|--|--|--|--|--|--|--|--|--|--|--|--|--|--|--|--|--|--|--|--|--|--|--|--|--|--|--|--|--|--|--|--|--|--|--|--|--|--|--|--|--|--|--|--|--|--|--|--|--|--|--|--|--|--|--|--|--|--|--|--|--|--|--|--|--|--|--|--|--|--|--|--|--|--|--|--|--|--|--|--|--|--|--|--|--|--|--|--|--|--|--|--|--|--|--|--|--|--|--|--|--|--|--|--|--|--|--|--|--|--|--|--|--|--|--|--|--|--|--|--|--|--|--|--|--|--|--|--|--|--|--|--|--|--|--|--|--|--|--|--|--|--|--|--|--|--|--|--|--|--|--|--|--|--|--|--|--|--|--|--|--|--|--|--|--|--|--|--|--|--|--|--|--|--|--|--|--|--|--|--|--|--|--|--|--|--|--|--|--|--|--|--|--|--|--|--|--|--|--|--|--|--|--|--|--|--|--|--|--|--|--|--|--|--|--|--|--|--|--|--|--|--|--|--|--|--|--|--|--|--|--|--|--|--|--|--|--|--|--|--|--|--|--|--|--|--|--|--|--|--|--|--|--|--|--|--|--|--|--|--|--|--|--|--|--|--|--|--|--|--|--|--|--|--|--|--|--|--|--|--|--|--|--|--|--|--|--|--|--|--|--|--|--|--|--|--|--|--|--|--|--|--|--|--|--|--|--|--|--|--|--|--|--|--|--|--|--|--|--|--|--|--|--|--|--|--|--|--|--|--|--|--|--|--|--|--|--|--|--|--|--|--|--|--|--|--|--|--|--|--|--|--|--|--|--|--|--|--|--|--|--|--|--|--|--|--|--|--|--|--|--|--|--|--|--|--|--|--|--|--|--|--|--|--|--|--|--|--|--|--|--|--|--|--|--|--|--|--|--|--|--|--|--|--|--|--|--|--|--|--|--|--|--|--|--|--|--|--|--|--|--|--|--|--|--|--|--|--|--|--|--|--|--|--|--|--|--|--|--|--|--|--|--|--|--|--|--|--|--|--|--|--|--|--|--|--|--|--|--|--|--|--|--|--|--|--|--|--|--|--|--|--|--|--|--|--|--|--|--|--|--|--|--|--|--|--|--|--|--|--|--|--|--|--|--|--|--|--|--|--|--|--|--|--|--|--|--|--|--|--|--|--|--|--|--|--|--|--|--|--|--|--|--|--|--|--|--|--|--|--|--|--|--|--|--|--|--|--|--|--|--|--|--|--|--|--|--|--|--|--|--|--|--|--|--|--|--|--|--|--|--|--|--|--|--|--|--|--|--|--|--|--|--|--|--|--|--|--|--|--|--|--|--|--|--|--|--|--|--|--|--|--|--|--|--|--|--|--|--|--|--|--|--|--|--|--|--|--|--|--|--|--|--|--|--|--|--|--|--|--|

GOALS & OBJECTIVES

- Owners return on investment
- Plant availability & Performance
- Life cycle & duration of assets
- Management of budgets & cost
- Plant, personnel & environmental safety
- Client & plant customized programs
- Management of regulatory processes, permits & contracts
- Risk mitigation

Task Name	% Complete	Duration	Start	Finish
1 - SUPPORTING CONTRACTS & SERVICES	14%	148.05 days	Thu 17/02/11	Sat 30/07/11
2 - Contracts	0%	0 days	Mon 16/05/11	Mon 16/05/11
24 - Establish Site	0%	146.65 days	Thu 17/02/11	Thu 28/07/11
30 - Components Offsite	23%	60.4 days	Tue 31/05/11	Sat 30/07/11
43 - COMMENCE OVERHAUL-DISASSEMBLY (TSA ON SITE)	0%	0 days	Mon 16/05/11	Mon 16/05/11
44 - TURBINE	59%	134.7 days	Mon 9/05/11	Thu 22/09/11
45 - PRELIMINARIES	99%	10 days	Mon 9/05/11	Wed 16/05/11
61 - TOP CASINGS & SUNDRY EQUIPMENT	100%	15 days	Thu 19/05/11	Thu 2/06/11
69 - COMPRESSOR/TURBINE ROTOR REMOVAL	100%	11.1 days	Fri 27/05/11	Tue 7/06/11
118 - COMPRESSOR/TURBINE ROTOR DE-BLADING	100%	12.2 days	Tue 7/06/11	Sun 19/06/11
146 - TRANSPORTATION	66%	66.4 days	Fri 27/05/11	Mon 1/08/11
177 - COMPRESSOR/TURBINE ROTOR RE-BLADING	86%	33.1 days	Sun 19/06/11	Fri 22/07/11
201 - CARRIER DE-BLADING	100%	2.2 days	Tue 31/05/11	Thu 2/06/11
214 - COMPRESSOR DIAPHRAGM REMOVAL	100%	14 days	Sun 29/05/11	Sun 12/06/11
215 - Bottom Diaphragm Removal	100%	4.1 days	Wed 8/06/11	Sun 12/06/11
233 - Top Diaphragm Removal	100%	4.4 days	Sun 29/05/11	Thu 2/06/11
252 - SUNDRY ITEMS	92%	54.2 days	Sun 29/05/11	Fri 22/07/11
290 - INSTALL COMPRESSOR DIAPHRAGMS	0%	7.9 days	Mon 18/07/11	Tue 26/07/11
291 - Install Bottom Compressor Diaphragms	0%	1.7 days	Mon 18/07/11	Wed 20/07/11
310 - Install Top Compressor Diaphragms	0%	1.9 days	Sun 24/07/11	Tue 26/07/11
329 - RE-INSTATEMENT	27%	50.3 days	Mon 13/06/11	Tue 2/08/11
330 - Install Blade Carriers	27%	50.3 days	Mon 13/06/11	Tue 2/08/11
371 - TURBINE REBUILD	0%	2.3 days	Tue 2/08/11	Fri 5/08/11
384 - COMPRESSOR REBUILD	0%	3.6 days	Fri 5/08/11	Tue 9/08/11
392 - COMBUSTION CHAMBER REBUILD	0%	43.1 days	Tue 9/08/11	Thu 22/09/11
426 - GENERATOR & EXCITER	64%	86.9 days	Thu 12/05/11	Sun 7/08/11
429 - Exciter Removal	100%	19.4 days	Thu 12/05/11	Tue 31/05/11
445 - Dismantle Generator	100%	49.8 days	Sun 15/05/11	Sun 3/07/11
519 - Rebuild Generator	0%	8.9 days	Fri 22/07/11	Sat 30/07/11
580 - Exciter Replacement	0%	16 days	Fri 22/07/11	Sun 7/08/11
601 - START DIESEL & GEARBOX	37%	90.15 days	Thu 12/05/11	Thu 11/08/11
602 - Remove Start Diesel	100%	12.7 days	Thu 12/05/11	Tue 24/05/11
630 - Reinstall Start Diesel	0%	16.2 days	Mon 25/07/11	Thu 11/08/11
665 - OTHER SUNDRY PLANT ITEMS	0%	60.2 days	Fri 6/05/11	Tue 5/07/11
746 - COMMISSIONING	0%	59.31 days	Sat 30/07/11	Fri 30/09/11



ENGINEERED TO DELIVER VALUE

TURBINE SPARES

- Along with our turbomachinery consulting and overhaul sections we also provide extremely informed and accurate locating and manufacturing services for all turbo machinery components.
- In most cases we can provide the parts needed post and pre overhaul and well into the future with supply to meet the demands of any preventative maintenance schedule that your turbine and rotating equipment requires.
- ATMSGGroup will assist you in locating a quality component to satisfy your requirements. ATMSGGroup work closely with our customers to source their future needs for replacement parts. We offer all gas turbine operators an alternative source for parts that were previously only available through the OEM.
- We work together with reputable suppliers of OEM parts as well as non OEM parts to ensure cost effective reliability.

ATMSGGroup Gas Turbine Spare Parts Supply Scope

- Major Inspection
- Hot Gas Path Inspection
- Combustion Inspection
- Turbin Hardware – Consumables – Tool Kits
- Turbine Fuel Delivery Systems
- Turbine Auxiliary Systems
- Turbine Electrical and Instrumentation Systems

Partners

CHROMALLOY

THOMASSEN AUSTRALASIA

PANTAC
SYSTEM CONTROL

CODED
CONTRACTING

NOVAFAST
Innovative Pipe Systems for Critical Processes
NovaFlo® GRE High Pressure Pipes
Anti Corrosion and Waterproofing Products

Basetec
Services
Environmental Engineering Services

Resonate
systems

Firmins Lane
Engineering

extending asset life
ALLOY BEARINGS

WIROMET
The power of the future





FIELD SERVICES

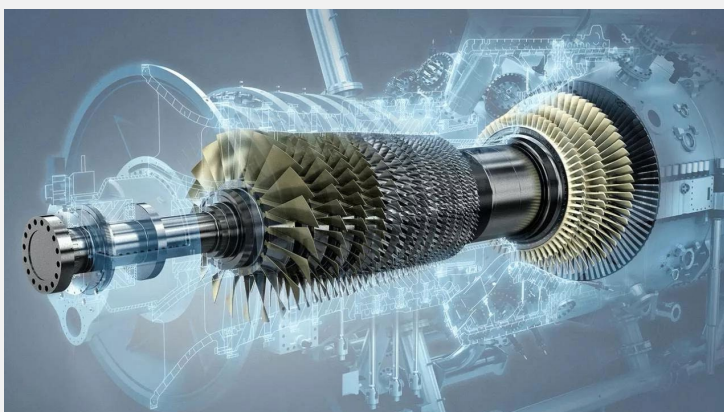
**UNMATCHED mobilization
& response TIME**

For more information call +61 0407 185 919 or visit
us at www.atmsgroup.com.au

Operation and Maintenance Services Contracts



“...we provide total solutions
for a more
productive work
flow.”



ATMSGroup offers long term Operation and Maintenance Service Agreements as a means of helping operators of rotating equipment realize significant productivity gains, cost reductions and increases in the availability and reliability of their equipment. We can provide the following:

- Performance Contracts
- Maintenance Contracts
- Reliability Improvements
- Machine Condition Monitoring
- Failure Root Cause Analysis
- Manpower Supply



Our Work Experience

Heavy Industrial Gas Turbines

- GE MS9001E
- GE MS6001B
- GE MS5001P
- GE MS5002
- Mitsubishi 701B
- Siemens V93.0, V93.1
- Alstom 13E2 (B Inspections)

Aero-Derivative Gas Turbines

- Rolls Royce Olympus 2022 'C' Rated
- Curtis Wright Power Turbine Mod Pod 25
- Ruston TB5000
- Solar Saturn CS1200
- Dresser-Rand DJ50
- LM2500

Steam Turbines

- Allen 1200HP to 5500HP
- Westinghouse 3500HP to 8000HP
- GE, Siemens, Parsons, ABB, Worthington

Electrical Generators

- Alstom
- Brush
- Mitsubishi
- Siemens/KraftWerk Union
- GE CL-55

High Speed Rotating Equipment

- Mafi Trench Turbo-Expanders
- Thomassen Multi-Stage Centrifugal Compressors
- Sulzer Multi-Stage Centrifugal Compressors
- Dresser-Rand Multi-Stage Centrifugal Compressors
- Indeng Multi-Stage Centrifugal Pumps

Balance of Plant

- Graffenstaden Load & Accessory Gearboxes
- Lube Oil and Seal Oil Systems
- Exhaust Systems
- Fuel gas and fuel oil systems
- Air Inlet Systems
- Inlet Fogging Systems

Construction

- New Well Pad Builds and Refurbishments
- Control System Upgrades
- Sub Station Refurbishment
- Gas Turbine Relocation and Installation
- Compressor Relocation and Installation
- Decommissioning of EOL Assets



ATMSGroup PTY LTD

29 Jacobsen Crescent, Holden Hill

South Australia 5088

Tel: +61 8 8164 5233 Mob: +61 0407 185 919

Email: jason.bretones@atmsgroup.com.au



Australasia Turbomachinery Services