



Customer satisfaction is
the measure of quality

www.atmsgroup.com.au



AUSTRALASIA TURBOMACHINERY SERVICES

PART OF ATMSGROUP

Is a global service provider to owners and operators of turbomachinery in the Power Generation, Oil & Gas and Petrochemical industries. Our services include installation, operation, maintenance, repair and overhaul of turbomachinery equipment such as Gas Turbines, Steam Turbines, Generators, Compressors, Pumps, Gearboxes and associated electrical /instrumentation.

It is our goal to provide the best independent turbomachinery technical and management support available in the business to our valued clients.

Our highly skilful team, with decades of technical experience and diversity of talent, enable us to provide our clients leadership, technical expertise and product knowledge covering a wide range of rotating equipment.

We are committed to providing highly experienced and effective technical and management professionals, at a reasonable and competitive cost.

We are committed to both our clients and our employees to provide win-win, mutually agreeable and sustainable long-term relationships.

We would like to thank you for choosing ATMSGROUP and guaranty we will exceed your expectations.





The Company

“Australasia Turbomachinery Services (ATMS) has a combined industry experience of 40 years and its key management team is made up of very skilled and professional personnel...”

Our Field Services team offers complete turnkey support to make sure your plant is properly maintained and operating with minimal downtime.

We offer flexible solutions that are focused on maximizing your return on investment. From unexpected outages to scheduled maintenance, turbine major overhauls and plant relocation. Australasia Turbomachinery Services (ATMS) response and turnaround times are unmatched.

Our team has 24/7 access to engineering support to safely diagnose and complete repairs. From planned outages and project execution, to unplanned outages and post-outages reporting, Australasia Turbomachinery Services will maintain your equipment with limited downtime

As stated by our corporate slogan "Customer satisfaction is the measure of quality" we strive to always achieve the highest attainable levels of efficiency in providing timely solutions to our clients.



FIELD SERVICES

Field Support & Engineering Services

- Turnkey Turbine and Plant Overhauls
- Gas Turbine Packages Installation, Relocation and Commissioning
- Borescope Inspections and Reporting
- Scheduled and Breakdown Maintenance
- Technical Support
- Comprehensive Customer Reports
- Gearbox Inspection and Overhaul
- Generator Overhauls
- Total Machine Alignment
- Instrumentation Checks and Calibration
- Plant Start-Up and Commissioning
- Control System Upgrades
- Life Assessment Tests & Activities



COMPONENT

Repairs

Australasia Turbomachinery Services (ATMS) offers cutting-edge inspection, repair and coatings for a broad range of turbine equipment. Specializing in Heavy Industrial Turbines,

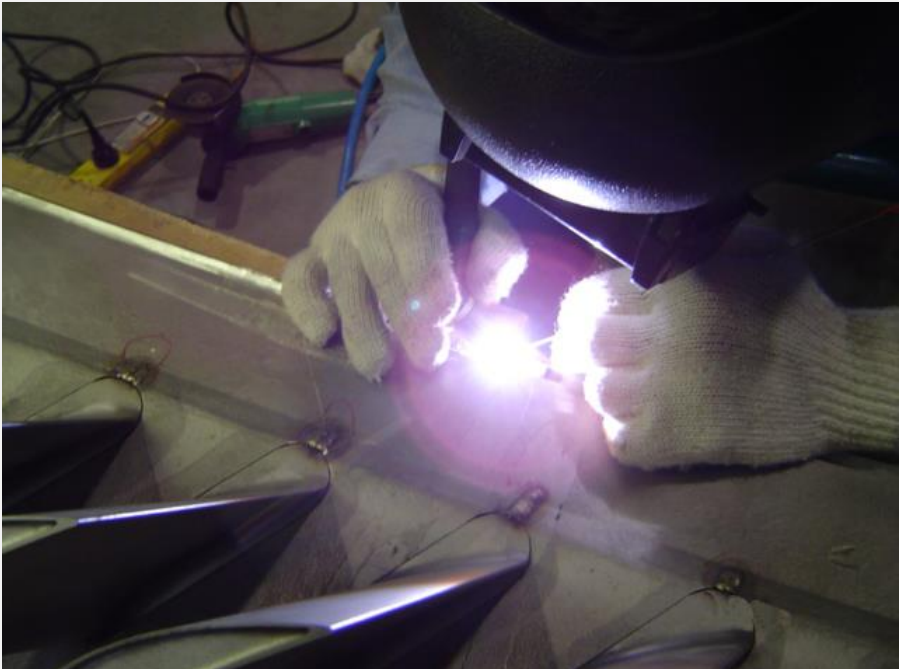
Our team can revitalize aging components, maximize turbine performance, and extend asset life through our innovative repair processes.

Advantages

Specialised Gas Turbine Component Repair

Specialised Welding Exotic and Super Alloy Materials

- Titanium Alloys
- Nickel Alloys
- Cobalt Alloys
- Stainless Steel
- Carbon & Low Alloy Steels
- Aluminium Alloys
- Magnesium Alloys
- Tungsten Inert Gas Welding
- Machining
- Coatings
- NDT
- Thermal Spray
- Heat Treatment
- Hard Chrome

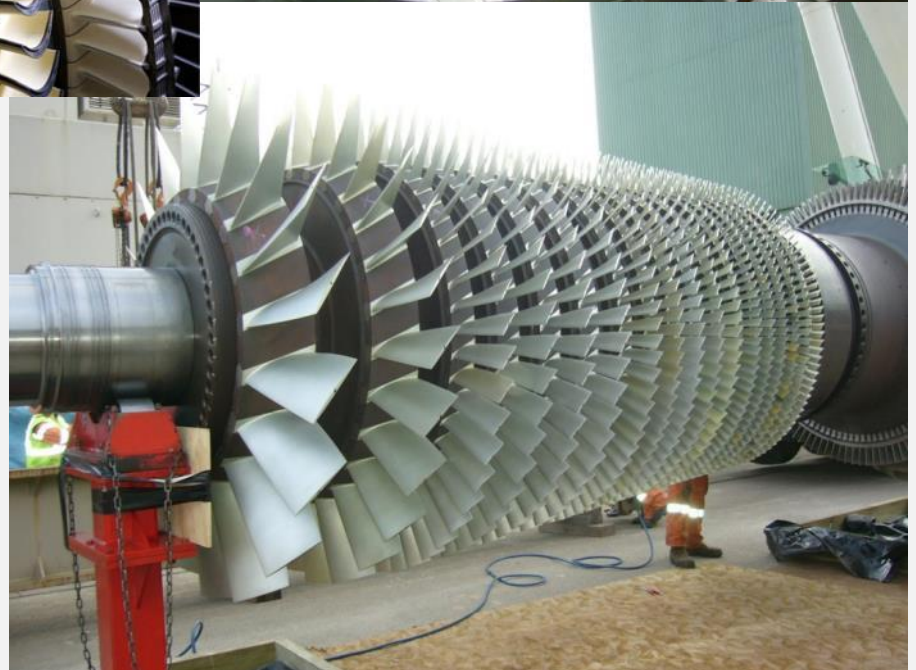


FIELD SERVICES

Gas Turbine

Rotor Overhaul

- Pre-Stripdown Balance and Inspection
- Rotor Cleaning (Ice and Glass Bead Blasting)
- Complete Rotor NDT and NDE (Replications & Hardness Tests)
- Compressor Stationary & Rotating Blades Coating
- Rotor Reassembly
- Rotor Balance and Run-Outs
- Vibration Analysis





Corporate Responsibility

“We consider Environment Health & Safety our corporate responsibility and a necessity in order to excel in our business activities and services.”



We, through our commitment to continued improvement in our Environmental Health and Safety programs, strive to:

- Be an environmentally responsible provider of high-quality services.
- Excel In preserving and protecting our natural resources.
- Be a responsible employer, adhering to health & safety regulations.

Our commitment to the safety of our employees is based on the following principles:

- All injuries can be avoided and prevented
- Management is responsible for preventing injuries
- Employee involvement is essential
- Training employees to be responsible in maintaining a safe work environment is a must

ATMS management is responsible for this policy and its scope and for communicating it and ensuring its implementation. ATMS Management is responsible for integrating these core values and objectives into the day-to-day process and operational practices

BORESCOPIC INSPECTIONS

Borescope & Remote Visual Inspections of Steam, Gas, Aero-Derivative Turbines and Generators...

Australasia Turbomachinery Services (ATMS) deliver comprehensive, professional on-site inspections. We can give you the peace of mind of knowing the current condition of your gas turbine. The current condition can be determined inexpensively with a borescope inspection.

Let us borescope your gas turbine. Latest inspection service technology using 3D phase measurement, combined with experts and years of hands-on experience, our experts will report on metallurgical conditions of internal components. Digital photographs will be made available before leaving the site. Timely follow-up reports are delivered with representative photographs and analysis of defects and recommendations.

ATMS utilizes an experienced network of independent and OEM qualified specialists on behalf of its clients to facilitate any critical path.

Technical Advisory of

Mechanical Inspections...

Inspections of all types...

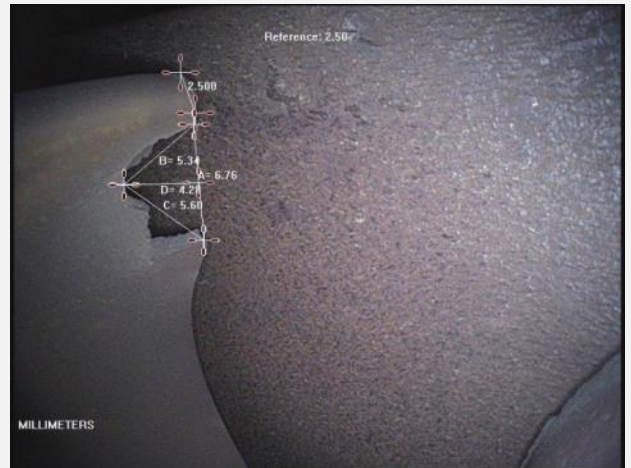
- Gas Turbines
- Steam Turbines
- Generators
- Bearings
- Compressors
- Combustion Systems
- Condenser Tubes
- Lube Oil Systems
- Heat Exchangers
- Hot Gas Path
- Pipe Drains
- Pumps Valves

- Accessory Base
- Combustion
- Hot Gas Path
- Major Overhaul



Mentor Visual iQ Analyze

3D Measurement and Probability of detection

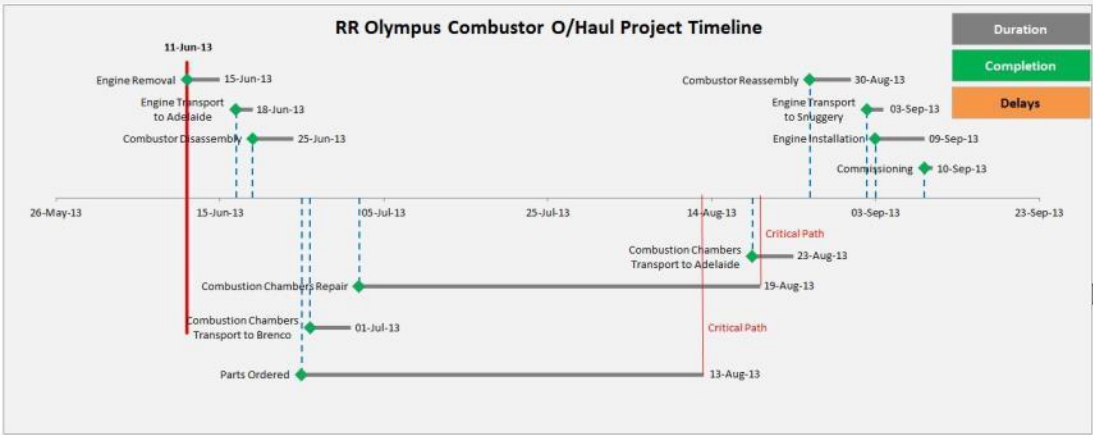


- Project Management
- Turnkey Outage Management and Planning
- Engineering Services
- Site Labour and Supervision
- Preparation and Reviews of critical JSAs/SWMS and ITPs
- Preparation and Reviews of critical Lift Plans
- QA Management
- HSE Management Plan

	B	C	D	F	G	H	I	J	K	L	M	N
	MH TO RT NET Schedule											
	Type of MH											
7	Component	Planned	MTY	Wood	FMBH	Pre-Pk	Early Overcut	Micro-cuts	Hedges	Victims	Rebut	Remarks
1	Blank Expedition Grounds Row #1	✓	19	X	X						28/06/2021	Check traps, tracking & incubation
2	Blank Expedition Grounds Row #2	✓	20	X	X						↓	Due: Admitted, check incubation progress and maintain on look for chicks. Chickens & MGT -
3	Blank Expedition Grounds Row #3	✓	21	X	X						↓	Ad about
4	Blank Expedition Grounds Row #4	✓	22	X	X						↓	Ad about
5	Blank Expedition Grounds Row #5	✓	23	X	X						↓	Ad about
6	Blank Expedition Grounds Row #6	✓	24	X	X						↓	Ad about
7	Blank Expedition Grounds Row #7	✓	25	X	X						↓	Ad about
8	Blank Expedition Grounds Row #8	✓	26	X	X						↓	Ad about
9	Blank Expedition Grounds Row #9	✓	27	X	X						↓	Ad about
10	Blank Expedition Grounds Row #10	✓	28	X	X						↓	Ad about
11	Blank Expedition Grounds Row #11	✓	29	X	X						↓	Ad about
12	Blank Expedition Grounds Row #12	✓	30	X	X						↓	Ad about
13	Blank Expedition Grounds Row #13	✓	31	X	X						↓	Ad about
14	Blank Expedition Grounds Row #14	✓	1	X	X						↓	Ad about
15	Blank Expedition Grounds Row #15	✓	2	X	X						↓	Ad about
16	Blank Expedition Grounds Row #16	✓	3	X	X						↓	Ad about
17	Blank Expedition Grounds Row #17	✓	4	X	X						↓	Ad about
18	Blank Expedition Grounds Row #18	✓	5	X	X						↓	Ad about
19	Blank Expedition Grounds Row #19	✓	6	X	X						↓	Ad about
20	Blank Expedition Grounds Row #20	✓	7	X	X						↓	Ad about
21	Blank Expedition Grounds Row #21	✓	8	X	X						↓	Ad about
22	Blank Expedition Grounds Row #22	✓	9	X	X						↓	Ad about
23	Blank Expedition Grounds Row #23	✓	10	X	X						↓	Ad about
24	Blank Expedition Grounds Row #24	✓	11	X	X						↓	Ad about
25	Blank Expedition Grounds Row #25	✓	12	X	X						↓	Ad about
26	Blank Expedition Grounds Row #26	✓	13	X	X						↓	Ad about
27	Blank Expedition Grounds Row #27	✓	14	X	X						↓	Ad about
28	Blank Expedition Grounds Row #28	✓	15	X	X						↓	Ad about
29	Blank Expedition Grounds Row #29	✓	16	X	X						↓	Ad about
30	Blank Expedition Grounds Row #30	✓	17	X	X						↓	Ad about
31	Blank Expedition Grounds Row #31	✓	18	X	X						↓	Ad about
32	Blank Expedition Grounds Row #32	✓	19	X	X						↓	Ad about
33	Blank Expedition Grounds Row #33	✓	20	X	X						↓	Ad about
34	Blank Expedition Grounds Row #34	✓	21	X	X						↓	Ad about
35	Blank Expedition Grounds Row #35	✓	22	X	X						↓	Ad about
36	Blank Expedition Grounds Row #36	✓	23	X	X						↓	Ad about
37	Blank Expedition Grounds Row #37	✓	24	X	X						↓	Ad about
38	Blank Expedition Grounds Row #38	✓	25	X	X						↓	Ad about
39	Blank Expedition Grounds Row #39	✓	26	X	X						↓	Ad about
40	Blank Expedition Grounds Row #40	✓	27	X	X						↓	Ad about
41	Blank Expedition Grounds Row #41	✓	28	X	X						↓	Ad about
42	Blank Expedition Grounds Row #42	✓	29	X	X						↓	Ad about
43	Blank Expedition Grounds Row #43	✓	30	X	X						↓	Ad about
44	Blank Expedition Grounds Row #44	✓	31	X	X						↓	Ad about
45	Blank Expedition Grounds Row #45	✓	1	X	X						↓	Ad about
46	Blank Expedition Grounds Row #46	✓	2	X	X						↓	Ad about
47	Blank Expedition Grounds Row #47	✓	3	X	X						↓	

- Owners return on investment
- Plant availability & Performance
- Life cycle & duration of assets
- Management of budgets & cost
- Plant, personnel & environmental safety
- Client & plant customised programmes
- Management of regulatory processes, permits & contracts
- Risk mitigation

	Task Name	% Complete	Duration	Start	Finish
1	↳ SUPPORTING CONTRACTS & SERVICES	14%	148.05 days	Thu 17/02/11	Sat 30/07/11
2	↳ Contracts	0%	0 days	Mon 16/05/11	Mon 16/05/11
24	↳ Establish Site	0%	146.65 days	Thu 17/02/11	Thu 28/07/11
30	↳ Components Offsite	23%	60.4 days	Tue 31/05/11	Sat 30/07/11
43	COMMENCE OVERHAUL-DISASSEMBLY (TSA ON SITE)	0%	0 days	Mon 16/05/11	Mon 16/05/11
44	↳ TURBINE	59%	134.7 days	Mon 9/05/11	Thu 22/09/11
45	↳ PRELIMINARIES	99%	10 days	Mon 9/05/11	Wed 15/05/11
61	↳ TOP CASINGS & SUNDRY EQUIPMENT	100%	15 days	Thu 19/05/11	Thu 2/06/11
89	↳ COMPRESSOR/TURBINE ROTOR REMOVAL	100%	11.1 days	Fri 27/05/11	Tue 7/06/11
118	↳ COMPRESSOR/TURBINE ROTOR DE-BLADING	100%	12.2 days	Tue 7/06/11	Sun 19/06/11
146	↳ TRANSPORTATION	66%	66.4 days	Fri 27/05/11	Mon 1/08/11
177	↳ COMPRESSOR/TURBINE ROTOR RE-BLADING	86%	33.1 days	Sun 19/06/11	Fri 22/07/11
201	↳ CARRIER DE-BLADING	100%	2.2 days	Tue 31/05/11	Thu 2/06/11
214	↳ COMPRESSOR DIAPHRAGM REMOVAL	100%	14 days	Sun 29/05/11	Sun 12/06/11
215	↳ Bottom Diaphragm Removal	100%	4.1 days	Wed 8/06/11	Sun 12/06/11
233	↳ Top Diaphragm Removal	100%	4.4 days	Sun 29/05/11	Thu 2/06/11
252	↳ SUNDRY ITEMS	92%	54.2 days	Sun 29/05/11	Fri 22/07/11
290	↳ INSTALL COMPRESSOR DIAPHRAGMS	0%	7.9 days	Mon 18/07/11	Tue 26/07/11
291	↳ Install Bottom Compressor Diaphragms	0%	1.7 days	Mon 18/07/11	Wed 20/07/11
310	↳ Install Top Compressor Diaphragms	0%	1.9 days	Sun 24/07/11	Tue 26/07/11
329	↳ RE-INSTATEMENT	27%	50.3 days	Mon 13/06/11	Tue 2/08/11
330	↳ Install Blade Carriers	27%	50.3 days	Mon 13/06/11	Tue 2/08/11
371	↳ TURBINE REBUILD	0%	2.3 days	Tue 2/08/11	Fri 5/08/11
384	↳ COMPRESSOR REBUILD	0%	3.6 days	Fri 5/08/11	Tue 9/08/11
392	↳ COMBUSTION CHAMBER REBUILD	0%	43.1 days	Tue 9/08/11	Thu 22/09/11
428	↳ GENERATOR & EXCITER	64%	86.9 days	Thu 12/05/11	Sun 7/08/11
429	↳ Exciter Removal	100%	19.4 days	Thu 12/05/11	Tue 31/05/11
445	↳ Dismantle Generator	100%	49.8 days	Sun 15/05/11	Sun 3/07/11
519	↳ Rebuild Generator	0%	8.9 days	Fri 22/07/11	Sat 30/07/11
580	↳ Exciter Replacement	0%	16 days	Fri 22/07/11	Sun 7/08/11
601	↳ START DIESEL & GEARBOX	37%	90.15 days	Thu 12/05/11	Thu 11/08/11
630	↳ Remove Start Diesel	100%	12.7 days	Thu 12/05/11	Tue 24/05/11
632	↳ Reinstate Start Diesel	0%	16.2 days	Mon 25/07/11	Thu 11/08/11
665	↳ OTHER SUNDRY PLANT ITEMS	0%	60.2 days	Fri 6/05/11	Tue 5/07/11
746	↳ COMMISSIONING	0%	59.31 days	Sat 30/07/11	Fri 30/09/11



ENGINEERED TO DELIVER VALUE

TURBINE SPARES

- Along with our turbomachinery consulting and overhaul sections we also provide extremely informed and accurate locating and manufacturing services for all turbo machinery components.
- In most cases we can provide the parts needed post and pre overhaul and well into the future with supply to meet the demands of any preventative maintenance schedule that your turbine and rotating equipment requires.
- ATMS will assist you in locating a quality component to satisfy your requirements. ATMS Group work closely with our customers to source their future needs for replacement parts. We offer all gas turbine operators an alternative source for parts that were previously only available through the OEM.
- We work together with reputable suppliers of OEM parts as well as non OEM parts.

ATMS Gas Turbine Spare Parts Supply Scope

- HOT GAS PATH/COMBUSTION/MAJOR PARTS
- TURBINE HARDWARE/CONSUMABLE PARTS/TOOL KITS
- TURBINE FUEL DELIVERY SYSTEMS
- TURBINE AUXILIARY SYSTEMS
- TURBINE ELECTRICAL & INSTRUMENTATION SYSTEMS

ASSOCIATES & AGENCIES

CHROMALLOY



**FIELD
SERVICES**

**UNMATCHED mobilisation
& response TIME**



For more information call +61 (0) 41111 1224 or visit us at atmsgroup.com.au



Operation and Maintenance Services Contracts

"...as total solutions
for a more productive
work flow."



ATMS offers long term Operation and Maintenance Service Agreements as a means of helping operators of rotating equipment realise significant productivity gains, cost reductions and increases in the availability and reliability of their equipment. We can provide the following:

- Performance Contracts
- Maintenance Contracts
- Reliability Improvements
- Machine Condition Monitoring
- Failure Root Cause Analysis
- Manpower Supply



Our Work Experience

Heavy Industrial Gas Turbines

- GE MS9001
- GE MS6001
- GE MS5001P
- GE MS5002
- GE MS3002
- Mitsubishi 701B
- Siemens V93.0, V93.1
- Alstom 13E2 (B Inspections)

Aero-Derivative Gas Turbines

- Rolls Royce Olympus 2022 'C' Rated
- Curtis Wright Power Turbine Mod Pod 25
- Ruston TB5000
- Solar Saturn CS1200
- Dresser-Rand DJ50
- LM2500

Steam Turbines

- Allen 1200HP to 5500HP
- Westinghouse 3500HP to 8000HP
- GE, Siemens, Parsons, ABB, Worthington

Electrical Generators

- Alstom
- Brush
- Mitsubishi
- Siemens/KraftWerk Union
- GE CL-55

High Speed Rotating Equipment

- Mafi Trench Turbo-Expanders
- Thomassen Multi-Stage Centrifugal Compressors
- Sulzer Multi-Stage Centrifugal Compressors
- Dresser-Rand Multi-Stage Centrifugal Compressors
- Indeng Multi-Stage Centrifugal Pumps

Balance of Plant

- Graffenstaden Load & Accessory Gearboxes
- Lube Oil and Seal Oil Systems
- Exhaust Systems
- Fuel gas and fuel oil systems
- Air Inlet Systems
- Inlet Fogging Systems



ATMSGROUP PTY LTD

29 Jacobsen Crescent Holden Hill

South Australia 5088

Tel: +61 8 8164 5233 Mob: +61 (0) 41111 1224

Email: john.bretones@atmsgroup.com.au

ATMSGROUP

Customer satisfaction is
the measure of quality