



Customer satisfaction is
the measure of quality

www.atmsgroup.com.au



AUSTRALASIA TURBOMACHINERY SERVICES

PART OF ATMSGROUP

Is a global service provider to owners and operators of turbomachinery in the Power Generation, Oil & Gas and Petrochemical industries. Our services include installation, operation, maintenance, repair and overhaul of turbomachinery equipment such as Gas Turbines, Steam Turbines, Generators, Compressors, Pumps, Gearboxes and associated electrical /instrumentation.

It is our goal to provide the best independent turbomachinery technical and management support available in the business to our valued clients.

Our highly skilful team, with decades of technical experience and diversity of talent, enable us to provide our clients leadership, technical expertise and product knowledge covering a wide range of rotating equipment.

We are committed to providing highly experienced and effective technical and management professionals, at a reasonable and competitive cost.

We are committed to both our clients and our employees to provide win-win, mutually agreeable and sustainable long-term relationships.

We would like to thank you for choosing ATMS and guaranty we will exceed your expectations.





The Company

“Australasia Turbomachinery Services (ATMS) has a combined industry experience of 40 years and its key management team is made up of very skilled and professional personnel...”

Our Field Services team offers complete turnkey support to make sure your plant is properly maintained and operating with minimal downtime.

We offer flexible solutions that are focused on maximizing your return on investment. From unexpected outages to scheduled maintenance, turbine major overhauls and plant relocation. Australasia Turbomachinery Services (ATMS) response and turnaround times are unmatched.

Our team has 24/7 access to engineering support to safely diagnose and complete repairs. From planned outages and project execution, to unplanned outages and post-outages reporting, Australasia Turbomachinery Services will maintain your equipment with limited downtime

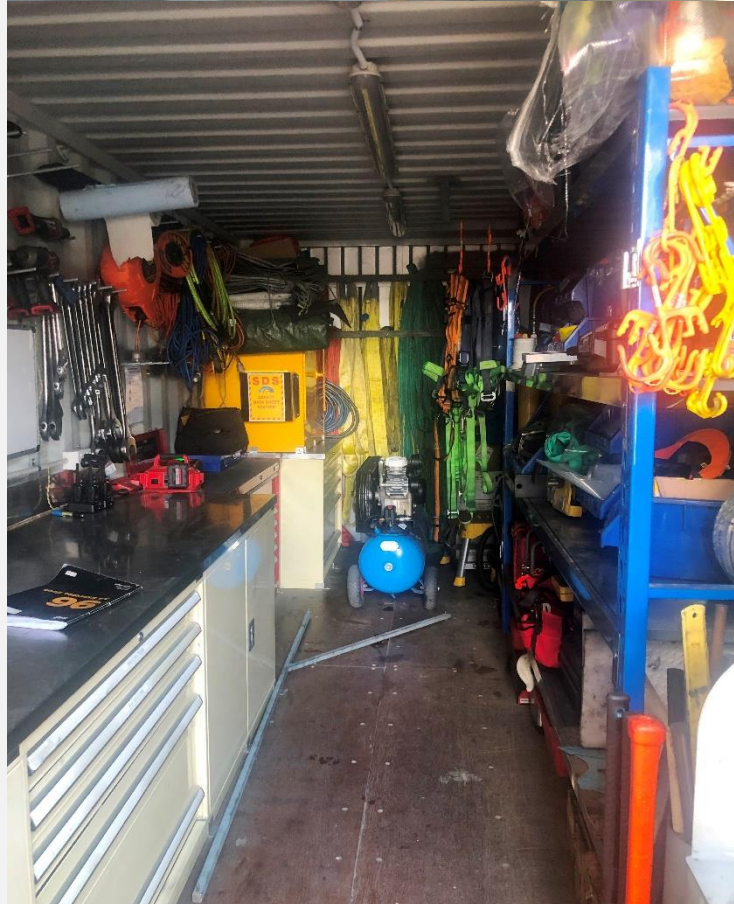
As stated by our corporate slogan "Customer satisfaction is the measure of quality" we strive to always achieve the highest attainable levels of efficiency in providing timely solutions to our clients.



FIELD SERVICES

Field Support & Engineering Services

- Turnkey Turbine and Plant Overhauls
- Gas Turbine Packages Installation, Relocation and Commissioning
- Borescope Inspections and Reporting
- Scheduled and Breakdown Maintenance
- Technical Support
- Comprehensive Customer Reports
- Gearbox Inspection and Overhaul
- Generator Overhauls
- Total Machine Alignment
- Instrumentation Checks and Calibration
- Plant Start-Up and Commissioning
- Control System Upgrades
- Life Assessment Tests & Activities



COMPONENT

Repairs

Australasia Turbomachinery Services (ATMS) offers cutting-edge inspection, repair and coatings for a broad range of turbine equipment. Specializing in Heavy Industrial Turbines,

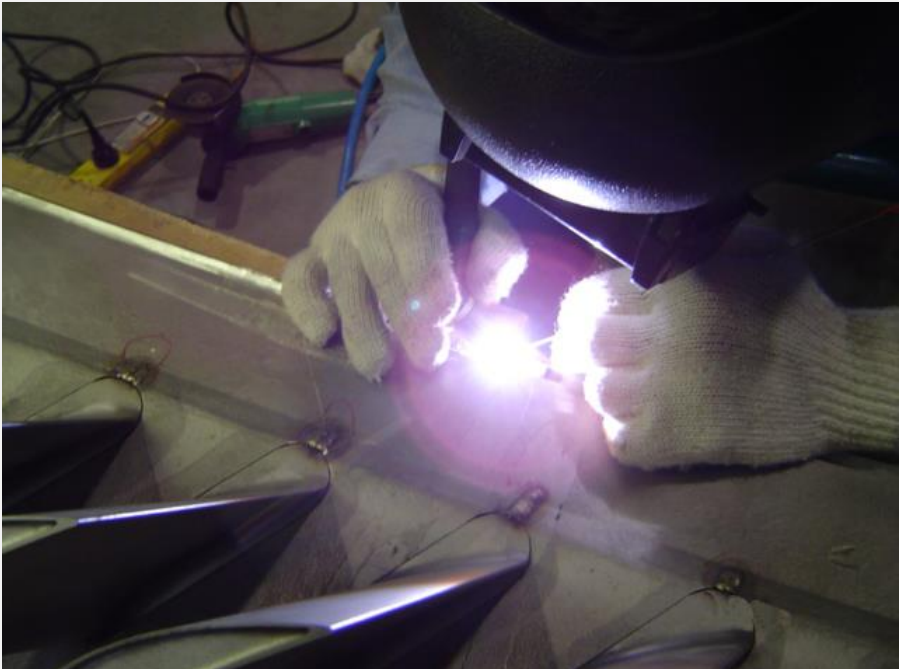
Our team can revitalize aging components, maximize turbine performance, and extend asset life through our innovative repair processes.

Advantages

Specialised Gas Turbine Component Repair

Specialised Welding Exotic and Super Alloy Materials

- Titanium Alloys
- Nickel Alloys
- Cobalt Alloys
- Stainless Steel
- Carbon & Low Alloy Steels
- Aluminium Alloys
- Magnesium Alloys
- Tungsten Inert Gas Welding
- Machining
- Coatings
- NDT
- Thermal Spray
- Heat Treatment
- Hard Chrome



FIELD SERVICES

Gas Turbine

Rotor Overhaul

- Pre-Stripdown Balance and Inspection
- Rotor Cleaning (Ice and Glass Bead Blasting)
- Complete Rotor NDT and NDE (Replications & Hardness Tests)
- Compressor Stationary & Rotating Blades Coating
- Rotor Reassembly
- Rotor Balance and Run-Outs
- Vibration Analysis





Corporate Responsibility

"We consider Environment Health & Safety our corporate responsibility and a necessity in order to excel in our business activities and services."



We, through our commitment to continued improvement in our Environmental Health and Safety programs, strive to:

- Be an environmentally responsible provider of high-quality services.
- Excel In preserving and protecting our natural resources.
- Be a responsible employer, adhering to health & safety regulations.

Our commitment to the safety of our employees is based on the following principles:

- All injuries can be avoided and prevented
- Management is responsible for preventing injuries
- Employee involvement is essential
- Training employees to be responsible in maintaining a safe work environment is a must

ATMS management is responsible for this policy and its scope and for communicating it and ensuring its implementation. ATMS Management is responsible for integrating these core values and objectives into the day-to-day process and operational practices

BORESCOPIC INSPECTIONS

Borescope & Remote Visual Inspections of Steam, Gas, Aero-Derivative Turbines and Generators...

Australasia Turbomachinery Services (ATMS) deliver comprehensive, professional on-site inspections. We can give you the peace of mind of knowing the current condition of your gas turbine. The current condition can be determined inexpensively with a borescope inspection.

Let us borescope your gas turbine. Latest inspection service technology using 3D phase measurement, combined with experts and years of hands-on experience, our experts will report on metallurgical conditions of internal components. Digital photographs will be made available before leaving the site. Timely follow-up reports are delivered with representative photographs and analysis of defects and recommendations.

ATMS utilizes an experienced network of independent and OEM qualified specialists on behalf of its clients to facilitate any critical path.

Technical Advisory of

Mechanical Inspections...

Inspections of all types...

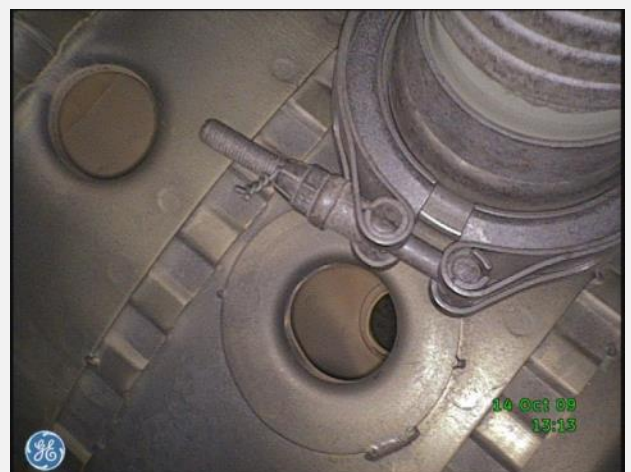
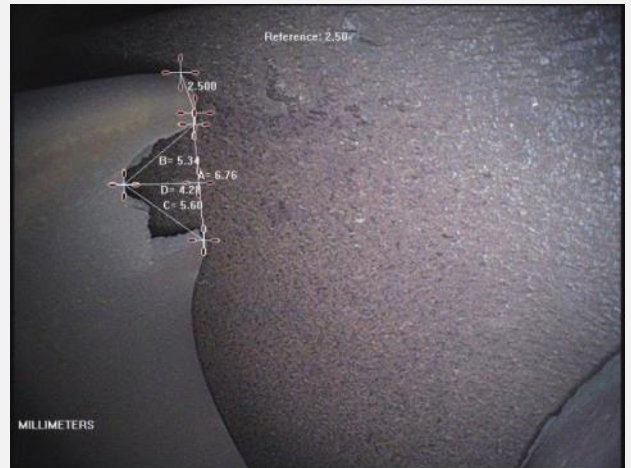
- Gas Turbines
- Steam Turbines
- Generators
- Bearings
- Compressors
- Combustion Systems
- Condenser Tubes
- Lube Oil Systems
- Heat Exchangers
- Hot Gas Path
- Pipe Drains
- Pumps Valves

- Accessory Base
- Combustion
- Hot Gas Path
- Major Overhaul



Mentor Visual iQ Analyze

3D Measurement and Probability of detection



PROJECT SERVICES

Outage Management Consultancy

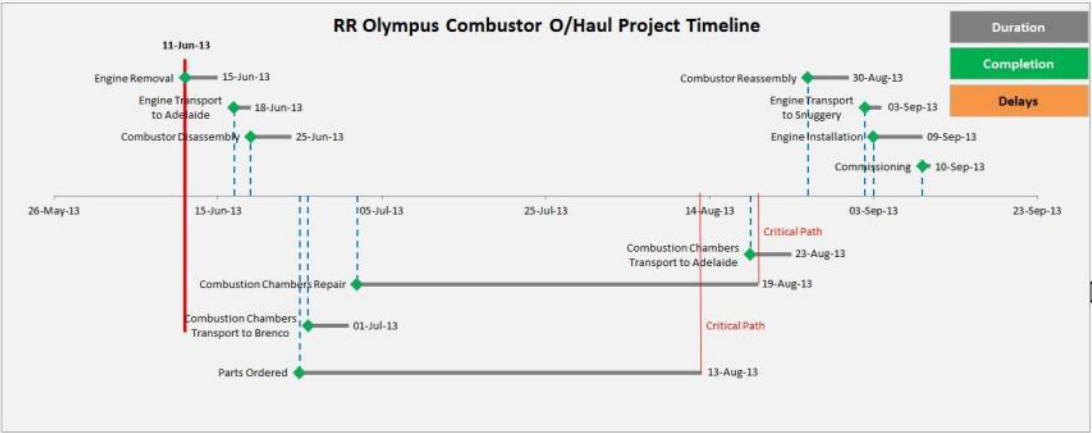
- Project Management
- Turnkey Outage Management and Planning
- Engineering Services
- Site Labour and Supervision
- Preparation and Reviews of critical JSAs/SWMS and ITPs
- Preparation and Reviews of critical Lift Plans
- QA Management
- HSE Management Plan

Component	Type of M&M										Details	Remarks
	Planned	RTY	Visual	F&M	Edy	Ultr	Replac	Visib	Replac	Replac		
1. Blush Expenditure Grouse Row #1		13	X	X							Check photo, checking & backcheck	Don't disturb, check birds expenditure grouse and not to be disturbed. Check & M&M
2. Blush Expenditure Grouse Row #2		17	X	X							At dawn	At dawn
3. Blush Expenditure Grouse Row #3		15	X	X							At dawn	At dawn
4. Blush Expenditure Grouse Row #4		15	X	X							At dawn	At dawn
5. Blush Expenditure Grouse Row #5		15	X	X							At dawn	At dawn
6. Blush Expenditure Grouse Row #6		15	X	X							At dawn	At dawn
7. Blush Expenditure Grouse Row #7		15	X	X							At dawn	At dawn
8. Blush Expenditure Grouse Row #8		15	X	X							At dawn	At dawn
9. Blush Expenditure Grouse Row #9		15	X	X							At dawn	At dawn
10. Blush Expenditure Grouse Row #10		15	X	X							At dawn	At dawn
11. Blush Expenditure Grouse Row #11		15	X	X							At dawn	At dawn
12. Blush Expenditure Grouse Row #12		15	X	X							At dawn	At dawn
13. Blush Expenditure Grouse Row #13		15	X	X							At dawn	At dawn
14. Blush Expenditure Grouse Row #14		15	X	X							At dawn	At dawn
15. Blush Expenditure Grouse Row #15		15	X	X							At dawn	At dawn
16. Blush Expenditure Grouse Row #16		15	X	X							At dawn	At dawn
17. Blush Expenditure Grouse Row #17		15	X	X							At dawn	At dawn
18. Blush Expenditure Grouse Row #18		15	X	X							At dawn	At dawn
19. Blush Expenditure Grouse Row #19		15	X	X							At dawn	At dawn
20. Blush Expenditure Grouse Row #20		15	X	X							At dawn	At dawn
21. Blush Expenditure Grouse Row #21		15	X	X							At dawn	At dawn
22. Blush Expenditure Grouse Row #22		15	X	X							At dawn	At dawn
23. Blush Expenditure Grouse Row #23		15	X	X							At dawn	At dawn
24. Blush Expenditure Grouse Row #24		15	X	X							At dawn	At dawn
25. Blush Expenditure Grouse Row #25		15	X	X							At dawn	At dawn
26. Blush Expenditure Grouse Row #26		15	X	X							At dawn	At dawn
27. Blush Expenditure Grouse Row #27		15	X	X							At dawn	At dawn
28. Blush Expenditure Grouse Row #28		15	X	X							At dawn	At dawn
29. Blush Expenditure Grouse Row #29		15	X	X							At dawn	At dawn
30. Blush Expenditure Grouse Row #30		15	X	X							At dawn	At dawn
31. Blush Expenditure Grouse Row #31		15	X	X							At dawn	At dawn
32. Blush Expenditure Grouse Row #32		15	X	X							At dawn	At dawn
33. Blush Expenditure Grouse Row #33		15	X	X							At dawn	At dawn
34. Blush Expenditure Grouse Row #34		15	X	X							At dawn	At dawn
35. Blush Expenditure Grouse Row #35		15	X	X							At dawn	At dawn
36. Blush Expenditure Grouse Row #36		15	X	X							At dawn	At dawn
37. Blush Expenditure Grouse Row #37		15	X	X							At dawn	At dawn
38. Blush Expenditure Grouse Row #38		15	X	X							At dawn	At dawn
39. Blush Expenditure Grouse Row #39		15	X	X							At dawn	At dawn
40. Blush Expenditure Grouse Row #40		15	X	X							At dawn	At dawn
41. Blush Expenditure Grouse Row #41		15	X	X							At dawn	At dawn
42. Blush Expenditure Grouse Row #42		15	X	X							At dawn	At dawn
43. Blush Expenditure Grouse Row #43		15	X	X							At dawn	At dawn
44. Blush Expenditure Grouse Row #44		15	X	X							At dawn	At dawn
45. Blush Expenditure Grouse Row #45		15	X	X							At dawn	At dawn
46. Blush Expenditure Grouse Row #46		15	X	X							At dawn	At dawn
47. Blush Expenditure Grouse Row #47		15	X	X							At dawn	At dawn
48. Blush Expenditure Grouse Row #48		15	X	X							At dawn	At dawn
49. Blush Expenditure Grouse Row #49		15	X	X							At dawn	At dawn
50. Blush Expenditure Grouse Row #50		15	X	X							At dawn	At dawn
51. Blush Expenditure Grouse Row #51		15	X	X							At dawn	At dawn
52. Blush Expenditure Grouse Row #52		15	X	X							At dawn	At dawn
53. Blush Expenditure Grouse Row #53		15	X	X							At dawn	At dawn
54. Blush Expenditure Grouse Row #54		15	X	X							At dawn	At dawn
55. Blush Expenditure Grouse Row #55		15	X	X							At dawn	At dawn
56. Blush Expenditure Grouse Row #56		15	X	X							At dawn	At dawn
57. Blush Expenditure Grouse Row #57		15	X	X							At dawn	At dawn
58. Blush Expenditure Grouse Row #58		15	X	X							At dawn	At dawn
59. Blush Expenditure Grouse Row #59		15	X	X							At dawn	At dawn
60. Blush Expenditure Grouse Row #60		15	X	X							At dawn	At dawn
61. Blush Expenditure Grouse Row #61		15	X	X							At dawn	At dawn
62. Blush Expenditure Grouse Row #62		15	X	X							At dawn	At dawn
63. Blush Expenditure Grouse Row #63		15	X	X							At dawn	At dawn
64. Blush Expenditure Grouse Row #64		15	X	X							At dawn	At dawn
65. Blush Expenditure Grouse Row #65		15	X	X							At dawn	At dawn
66. Blush Expenditure Grouse Row #66		15	X	X							At dawn	At dawn
67. Blush Expenditure Grouse Row #67		15	X	X							At dawn	At dawn
68. Blush Expenditure Grouse Row #68		15	X	X							At dawn	At dawn
69. Blush Expenditure Grouse Row #69		15	X	X							At dawn	At dawn
70. Blush Expenditure Grouse Row #70		15	X	X							At dawn	At dawn
71. Blush Expenditure Grouse Row #71		15	X	X							At dawn	At dawn
72. Blush Expenditure Grouse Row #72		15	X	X							At dawn	At dawn
73. Blush Expenditure Grouse Row #73		15	X	X							At dawn	At dawn
74. Blush Expenditure Grouse Row #74		15	X	X							At dawn	At dawn
75. Blush Expenditure Grouse Row #75		15	X	X							At dawn	At dawn
76. Blush Expenditure Grouse Row #76		15	X	X							At dawn	At dawn
77. Blush Expenditure Grouse Row #77		15	X	X							At dawn	At dawn
78. Blush Expenditure Grouse Row #78		15	X	X							At dawn	At dawn
79. Blush Expenditure Grouse Row #79		15	X	X							At dawn	At dawn
80. Blush Expenditure Grouse Row #80		15	X	X							At dawn	At dawn
81. Blush Expenditure Grouse Row #81		15	X	X							At dawn	At dawn
82. Blush Expenditure Grouse Row #82		15	X	X							At dawn	At dawn
83. Blush Expenditure Grouse Row #83		15	X	X							At dawn	At dawn
84. Blush Expenditure Grouse Row #84		15	X	X							At dawn	At dawn
85. Blush Expenditure Grouse Row #85		15	X	X							At dawn	At dawn
86. Blush Expenditure Grouse Row #86		15	X	X							At dawn	At dawn
87. Blush Expenditure Grouse Row #87		15	X	X							At dawn	At dawn
88. Blush Expenditure Grouse Row #88		15	X	X							At dawn	At dawn
89. Blush Expenditure Grouse Row #89		15	X	X							At dawn	At dawn
90. Blush Expenditure Grouse Row #90		15	X	X							At dawn	At dawn
91. Blush Expenditure Grouse Row #91		15	X	X							At dawn	At dawn
92. Blush Expenditure Grouse Row #92		15	X	X							At dawn	At dawn
93. Blush Expenditure Grouse Row #93		15	X	X							At dawn	At dawn
94. Blush Expenditure Grouse Row #94		15	X	X							At dawn	At dawn
95. Blush Expenditure Grouse Row #95		15	X	X							At dawn	At dawn
96. Blush Expenditure Grouse Row #96		15	X	X							At dawn	At dawn
97. Blush Expenditure Grouse Row #97		15	X	X							At dawn	At dawn
98. Blush Expenditure Grouse Row #98		15	X	X							At dawn	At dawn
99. Blush Expenditure Grouse Row #99		15	X	X							At dawn	At dawn
100. Blush Expenditure Grouse Row #100		15	X	X							At dawn	At dawn

GOALS & OBJECTIVES

- Owners return on investment
- Plant availability & Performance
- Life cycle & duration of assets
- Management of budgets & cost
- Plant, personnel & environmental safety
- Client & plant customised programmes
- Management of regulatory processes, permits & contracts
- Risk mitigation

Task Name	% Complete	Duration	Start	Finish
1. SUPPORTING CONTRACTS & SERVICES	14%	148.05 days	Thu 17/02/11	Sat 30/07/11
2. Contracts	0%	0 days	Mon 15/05/11	Mon 15/05/11
24. Establish Site	0%	146.65 days	Thu 17/02/11	Thu 28/07/11
30. Components Offsite	23%	60.4 days	Tue 21/05/11	Sat 30/07/11
43. COMMENCE OVERHAUL-DISASSEMBLY (TSA ON SITE)	0%	0 days	Mon 15/05/11	Mon 15/05/11
44. TURBINE	59%	134.7 days	Mon 9/05/11	Thu 22/09/11
45. PRELIMINARIES	99%	10 days	Mon 9/05/11	Wed 18/05/11
61. TOP CASINGS & SUNDRY EQUIPMENT	100%	15 days	Thu 19/05/11	Thu 2/06/11
89. COMPRESSOR/TURBINE ROTOR REMOVAL	100%	11.1 days	Fri 27/05/11	Tue 7/06/11
118. COMPRESSOR/TURBINE ROTOR DE-BLADING	100%	12.2 days	Tue 7/06/11	Sun 19/06/11
146. TRANSPORTATION	66%	66.4 days	Fri 27/05/11	Mon 1/08/11
177. COMPRESSOR/TURBINE ROTOR RE-BLADING	86%	33.1 days	Sun 19/06/11	Fri 22/07/11
201. CARRIER DE-BLADING	100%	2.2 days	Tue 21/05/11	Thu 2/06/11
214. COMPRESSOR DIAPHRAGM REMOVAL	100%	14 days	Sun 29/05/11	Sun 12/06/11
215. Bottom Diaphragm Removal	100%	4.1 days	Wed 8/06/11	Sun 12/06/11
233. Top Diaphragm Removal	100%	4.4 days	Sun 29/05/11	Thu 2/06/11
252. SUNDRY ITEMS	92%	54.2 days	Sun 29/05/11	Fri 22/07/11
290. INSTALL COMPRESSOR DIAPHRAGMS	0%	7.9 days	Mon 18/07/11	Tue 26/07/11
291. Install Bottom Compressor Diaphragms	0%	1.7 days	Mon 18/07/11	Wed 20/07/11
310. Install Top Compressor Diaphragms	0%	1.9 days	Sun 24/07/11	Tue 26/07/11
329. RE-INSTATEMENT	27%	50.3 days	Mon 13/06/11	Tue 2/08/11
330. Install Blade Carriers	27%	50.3 days	Mon 13/06/11	Tue 2/08/11
371. TURBINE REBUILD	0%	2.3 days	Tue 2/08/11	Fri 5/08/11
384. COMPRESSOR REBUILD	0%	3.6 days	Fri 5/08/11	Tue 9/08/11
392. COMBUSTION CHAMBER REBUILD	0%	43.1 days	Tue 9/08/11	Thu 22/09/11
428. GENERATOR & EXCITER	64%	86.9 days	Thu 12/05/11	Sun 7/08/11
429. Exciter Removal	100%	19.4 days	Thu 12/05/11	Tue 31/05/11
445. Dismantle Generator	100%	49.8 days	Sun 15/05/11	Sun 3/07/11
519. Rebuild Generator	0%	8.9 days	Fri 22/07/11	Sat 30/07/11
580. Exciter Replacement	0%	16 days	Fri 22/07/11	Sun 7/08/11
601. START DIESEL & GEARBOX	37%	90.15 days	Thu 12/05/11	Thu 11/08/11
602. Remove Start Diesel	100%	12.7 days	Thu 12/05/11	Tue 24/05/11
630. Reinstate Start Diesel	0%	16.2 days	Mon 25/07/11	Thu 11/08/11
665. OTHER SUNDRY PLANT ITEMS	0%	60.2 days	Fri 6/05/11	Tue 5/07/11
746. COMMISSIONING	0%	59.31 days	Sat 30/07/11	Fri 30/09/11



ENGINEERED TO DELIVER VALUE

TURBINE SPARES

- Along with our turbomachinery consulting and overhaul sections we also provide extremely informed and accurate locating and manufacturing services for all turbo machinery components.
- In most cases we can provide the parts needed post and pre overhaul and well into the future with supply to meet the demands of any preventative maintenance schedule that your turbine and rotating equipment requires.
- ATMS will assist you in locating a quality component to satisfy your requirements. ATMS Group work closely with our customers to source their future needs for replacement parts. We offer all gas turbine operators an alternative source for parts that were previously only available through the OEM.
- We work together with reputable suppliers of OEM parts as well as non OEM parts.

ATMS Gas Turbine Spare Parts Supply Scope

- HOT GAS PATH/COMBUSTION/MAJOR PARTS
- TURBINE HARDWARE/CONSUMABLE PARTS/TOOL KITS
- TURBINE FUEL DELIVERY SYSTEMS
- TURBINE AUXILIARY SYSTEMS
- TURBINE ELECTRICAL & INSTRUMENTATION SYSTEMS

ASSOCIATES & AGENCIES

CHROMALLOY



**FIELD
SERVICES**

**UNMATCHED mobilisation
& response TIME**



For more information call +61 (0) 41111 1224 or visit us at atmsgroup.com.au



Operation and Maintenance Services Contracts

"...as total solutions
for a more productive
work flow."



ATMS offers long term Operation and Maintenance Service Agreements as a means of helping operators of rotating equipment realise significant productivity gains, cost reductions and increases in the availability and reliability of their equipment. We can provide the following:

- Performance Contracts
- Maintenance Contracts
- Reliability Improvements
- Machine Condition Monitoring
- Failure Root Cause Analysis
- Manpower Supply



Our Work Experience

Heavy Industrial Gas Turbines

- GE MS9001
- GE MS6001
- GE MS5001P
- GE MS5002
- GE MS3002
- Mitsubishi 701B
- Siemens V93.0, V93.1
- Alstom 13E2 (B Inspections)

Aero-Derivative Gas Turbines

- Rolls Royce Olympus 2022 'C' Rated
- Curtis Wright Power Turbine Mod Pod 25
- Ruston TB5000
- Solar Saturn CS1200
- Dresser-Rand DJ50

Steam Turbines

- Allen 1200HP to 5500HP
- Westinghouse 3500HP to 8000HP
- GE, Siemens, Parsons, ABB, Worthington

Electrical Generators

- Alstom
- Brush
- Mitsubishi
- Siemens/KraftWerk Union
- GE CL-55

High Speed Rotating Equipment

- Mafi Trench Turbo-Expanders
- Thomassen Multi-Stage Centrifugal Compressors
- Sulzer Multi-Stage Centrifugal Compressors
- Dresser-Rand Multi-Stage Centrifugal Compressors
- Indeng Multi-Stage Centrifugal Pumps

Balance of Plant

- Graffenstaden Load & Accessory Gearboxes
- Lube Oil and Seal Oil Systems
- Exhaust Systems
- Fuel gas and fuel oil systems
- Air Inlet Systems
- Inlet Fogging Systems



AUSTRALASIA TURBOMACHINERY SERVICES (ATMSGROUP)

37 Warwick Ave Toorak Gardens

South Australia 5065

Tel: +61 8 8332 4161 Mob: +61 (0) 41111 1224

Email: john.bretones@atmsgroup.com.au

ATMSGROUP

Customer satisfaction is
the measure of quality